



TRACTOR DIVISION
Studebaker
CORPORATION

ILLUSTRATED
Parts List
PRINTED IN U. S. A.

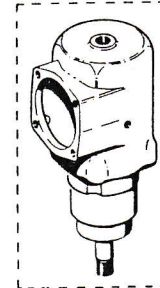
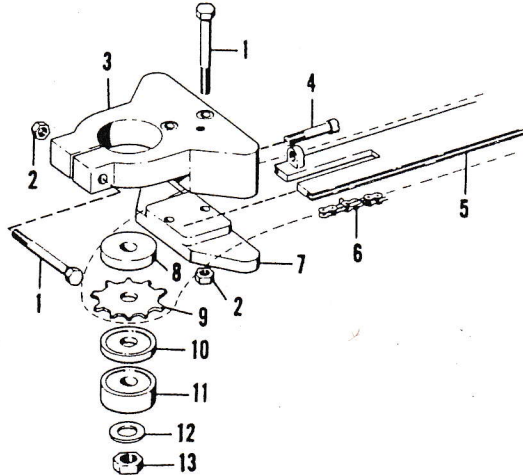
CHAIN SAW

Model Nr. 58-A, 185, 58 through 52

Effective Date: 7-15-63

Form Number: PL-107

To continue its program of quality and design improvement, the manufacturer reserves the right to change specifications, designs or prices without notice and without incurring obligation.



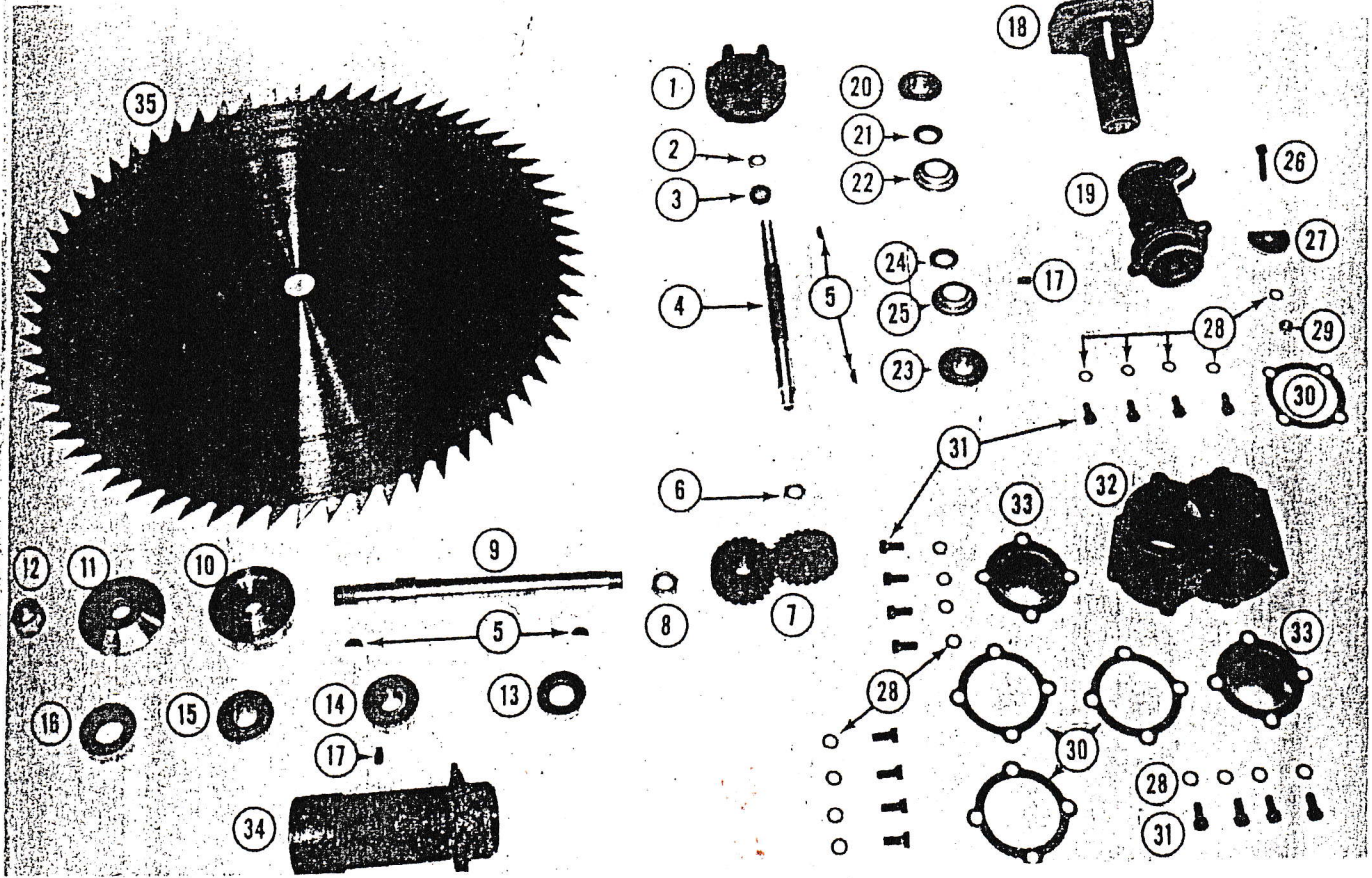
Key No.	No. Req'd	Name and Description	Part No. Models 58-A & 185	Part No. Model 58	Part No. Model 56 & 57	Part No. Models 53, 54, 55	Part No. Model 52
1	3	Clamp and Bracket Bolts	159-S	159-S	159-S	159-S	159-S
2	3	Clamp and Bracket Bolt Nuts	238-N	238-N	238-N	238-N	238-N
3	1	Bracket	CS-101-1 (3-1/4" hole)	CS-101 (2-3/4" hole)	CS-101 (2-3/4" hole)	CS-101 (2-3/4" hole)	CS-101 (2-3/4" hole)
Not Shown		Bracket Hole bushing, to convert from CS-101-1 3-1/4" hole to part CS-101 2-3/4" hole. Model 58-A and 185 drives require 3-1/4" hole, and Models 52, 53, 54, 55, 56, 57, and 58, require 2-3/4" hole. Part No. CS-331.					
4		Chain Tension Adjusting Bolt	CS-317	CS-317	CS-317	CS-317	not req'd
Not Shown		Chain Tension Adjusting Bolt Nut	CS-318	CS-318	CS-318	CS-318	not req'd
5	1	Guide Bar 26" Standard Note: Also lengths available: 32", 36", 40". Specify length when ordering.	CS-319 (5/64 groove width) mates with CS-320	CS-319 (5/64 groove width) mates with CS-320	CS-319 (5/64 groove width) mates with CS-320	*CS-302 (1/16 groove width) mates with CS-303	*CS-303 (1/16 groove width) mates with CS-303
		*Parts CS-302 & CS-303 can be replaced in matched sets as new style parts CS-319 and CS-320, and used on any model drive.					
6	1	Chain Note: Also lengths available: 32", 36", 40". Specify length when ordering.	CS-320 (5/64 groove width) mates with CS-319	CS-320 (5/64 groove width) mates with CS-319	CS-320 (5/64 groove width) mates with CS-319	*CS-303 (1/16 groove width) mates with CS-302	*CS-303 (1/16 groove width) mates with CS-302
		*Parts CS-302 and CS-303 can be replaced in matched sets as new style parts CS-319 and CS-320, and used on any model drive.					
7	1	Clamp	CS-102	CS-102	CS-102	CS-102	CS-102
8	1	Loose Collar 1/2" thick	RO-325	RO-325	RO-325	RO-325	RO-308
9	1	Sprocket (7/8" hole will be furnished if not specified.)	CS-301 (7/8" hole)	CS-301 (7/8" hole)	CS-301 (7/8" hole)	CS-301 (7/8" hole)	CS-301 (1-3/8" hole)
10	1	Loose Collar, 1/4" thick	RO-324	RO-324	RO-324	RO-324	RO-320/RO-319
11	1	Loose Collar 3/4" thick	RO-326	RO-326	RO-326	RO-326	RO-307
12	2	Washer, for 244-N Nut	414-W	414-W	414-W	414-W	414-W
13	1	Nut	244-N	244-N	RO-327	RO-327	RO-312
Not Shown		Saw Chain Left Hand Cutter	CS-304	CS-304	CS-304	CS-304 (specify 1/16" groove width)	CS-304 (specify 1/16" groove width)
Not Shown		Saw Chain Right Hand Cutter	CS-305	CS-305	CS-305	CS-305 (specify 1/16" groove width)	CS-305 (specify 1/16" groove width)
Not Shown		Saw Chain Drive Link	CS-306	CS-306	CS-306	CS-306	CS-306
Not Shown		Saw Chain Tie Strap	CS-307	CS-307	CS-307	CS-307	CS-307
"		Saw Chain Master Link	CS-308	CS-308	CS-308	CS-308	CS-308
"		Saw Chain Rivet	CS-309	CS-309	CS-309	CS-309	CS-309
"		Saw Chain Master Pin	CS-310	CS-310	CS-310	CS-310	CS-310
"		File Holder with file	CS-311	CS-311	CS-311	CS-311	CS-311
"		File	CS-312	CS-312	CS-312	CS-312	CS-312
"		Depth Gauge Jointer	CS-313-A	CS-313-A	CS-313-A	CS-313-A	CS-313-A

Hope This IS WANT You Need!

26" ROTARY BUZZ SAW

PLATE EE

ROTARY SAW ASSEMBLY



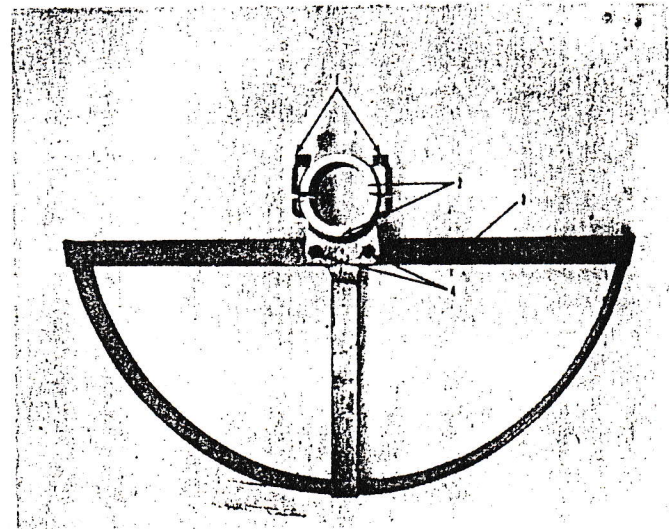
Don't Get Gravelly Hat In It! Ha! Ha!

PLATE EE

ROTARY SAW ASSEMBLY

SAW GUARD 26"

PHOTO NO.	PART NO.	DESCRIPTION	PRICE
1		Slip Clutch Complete	8.15
2	1304	Drive Shaft Nut	.12
3	309-W	Lockwasher	.02
4	M 308	Drive Shaft, Tapered	1.21
5	504-K	Woodruff Key	.02
6	227-N	Drive Shaft Lock Nut	.18
7	M 318	Spiral Gear	3.30
8	229-N	Saw Arbor Lock Nut	.22
9	A 447	Saw Arbor	4.20
10	A 448	Inner Collar	1.90
11	A 449	Outer Collar	1.65
12	230-N	Saw Collar Lock Nut	.45
13	M 459	Oil Seal	.90
14	3147	Bearing Cone & Cup	2.62
15	A 454	Bearing Cone & Cup	2.62
16	A 452	Oil Seal	1.50
17	701-P	Pipe Plug	.05
18	M 101-S	Drive Shaft Housing	4.03
19	M 102-S	Swivel Casting	3.03
20	3147	Bearing Cone & Cup	2.62
21	L 126	Oil Seal	.56
22	3151	Oil Seal Retainer	.04
23	3147	Bearing Cone & Cup	2.62
24	L 126	Oil Seal	.56
25	3151	Oil Seal Retainer	.04
26	124-S	Clamp Bolt	.05
27	A 451	Index Key	.80
28	305-W	Lockwashers	.01
29	205-N	Clamp Bolt Nut	.03
30	M 326	Gear Housing Gaskets	.05
31	121-S	Gear Housing Bolt	.04
32	M 103	Gear Housing	8.40
33	M 306	Gear Housing Cap	.35
34	A 137	Saw Arbor Housing	3.90
35	A 453	High Speed Saw Blade	30.00
NS	M 139	Housing Adj. Shims .005"	.07
NS	M 139	Housing Adj. Shims .020"	.15



PARTS AND PRICE LIST

PHOTO NO.	PART NO.	DESCRIPTION	PRICE
1	171-S	Clamp Screw	.08
2	PS 101	Guard Collar Casting	3.75
3	PS 309	Rim Assembly	5.25
4	197-S	Rim Securing Screw	.08